

# Side Impact Crashworthiness Evaluation 2.0 Dynamic Barrier Fixture Drawings

## Version I

April 2023

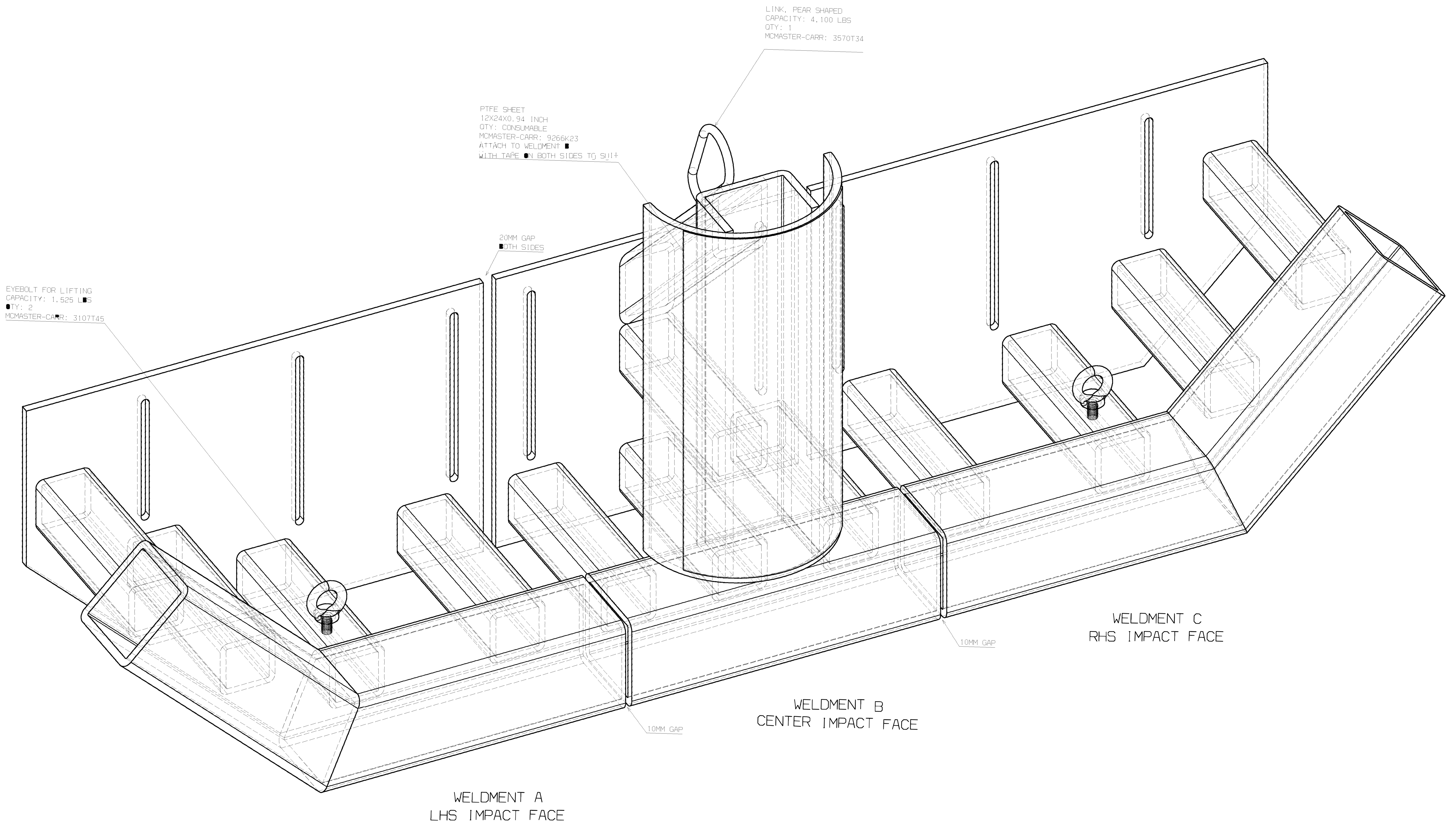


**Insurance Institute for Highway Safety**

988 Dairy Road  
Ruckersville, VA 22968  
researchpapers@iihs.org  
+1 434 985 4600

[iihs.org](http://iihs.org)





LINK, PEAR SHAPED  
 CAPACITY: 4,100 LBS  
 QTY: 1  
 MCMASTER-CARR: 3570T34

PTFE SHEET  
 12X24X0.94 INCH  
 QTY: CONSUMABLE  
 MCMASTER-CARR: 9266K23  
 ATTACH TO WELDMENT A  
 WITH TAPE ON BOTH SIDES TO SUIT

EYEBOLT FOR LIFTING  
 CAPACITY: 1,525 LBS  
 QTY: 2  
 MCMASTER-CARR: 3107T45

20MM GAP  
 BOTH SIDES

10MM GAP

10MM GAP

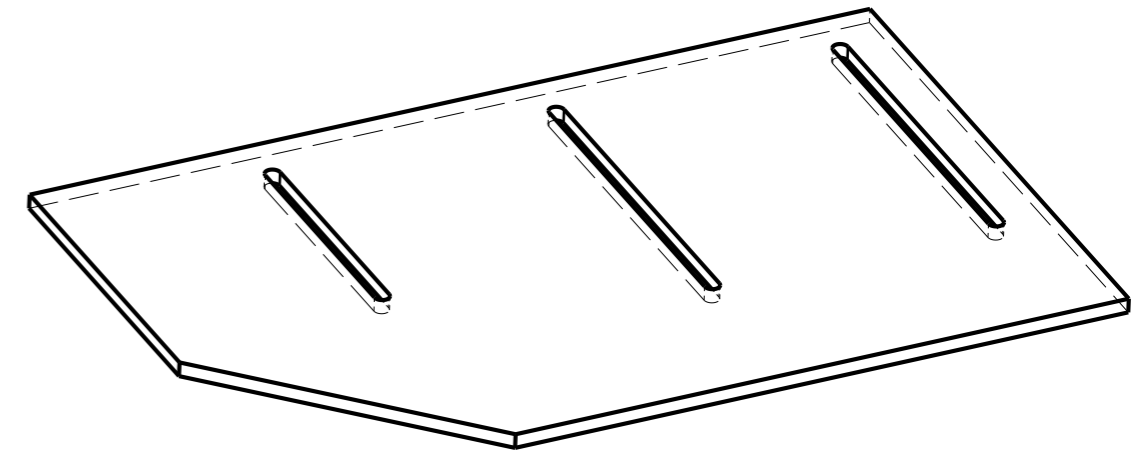
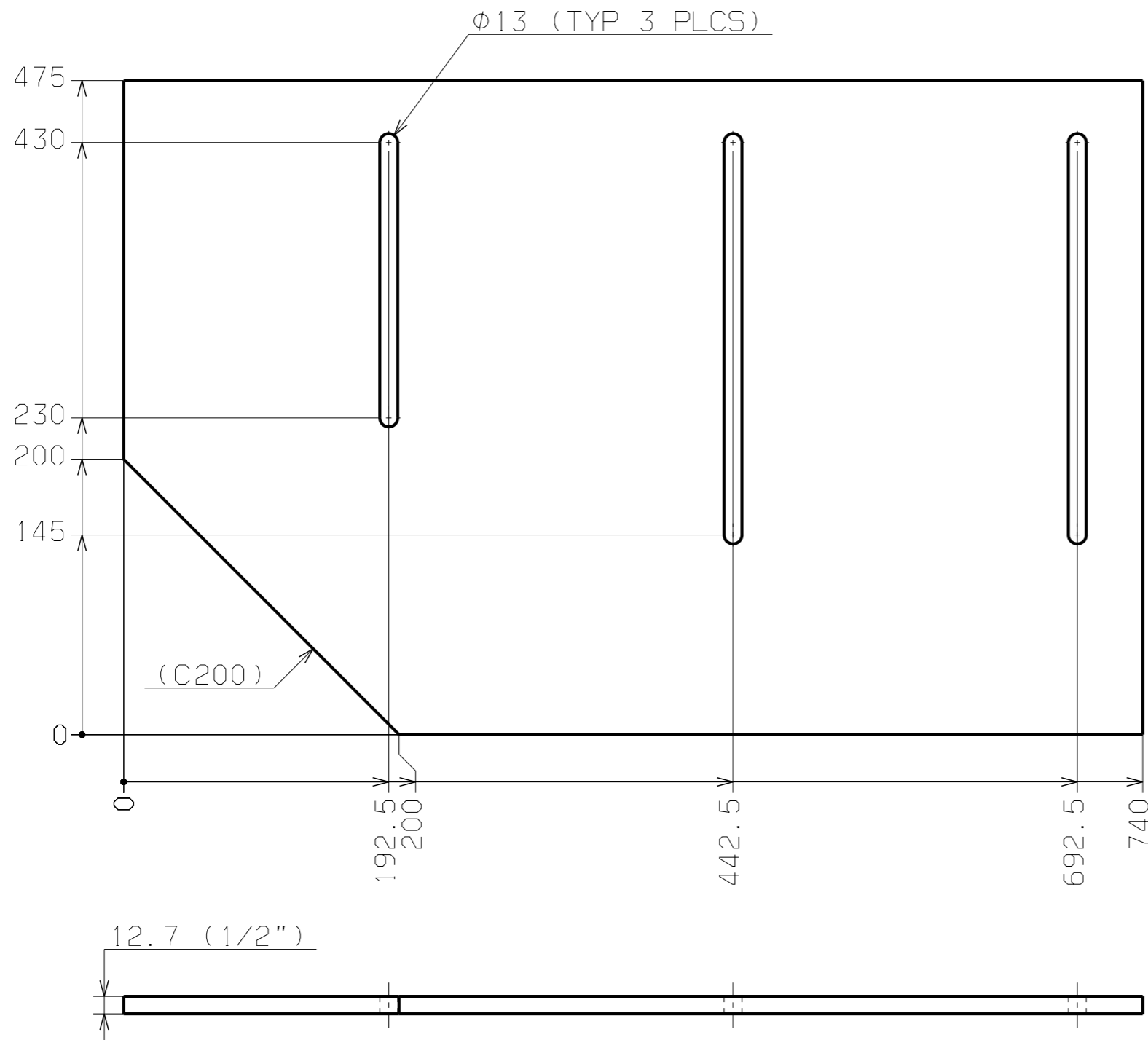
WELDMENT A  
 LHS IMPACT FACE

WELDMENT B  
 CENTER IMPACT FACE

WELDMENT C  
 RHS IMPACT FACE

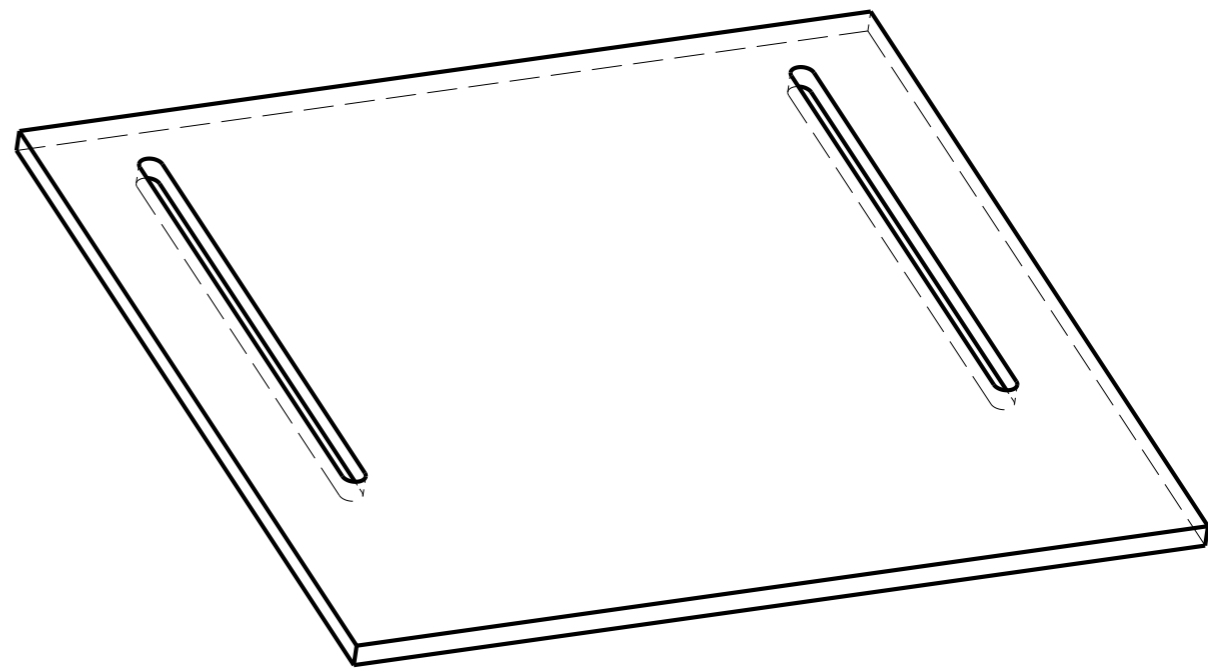
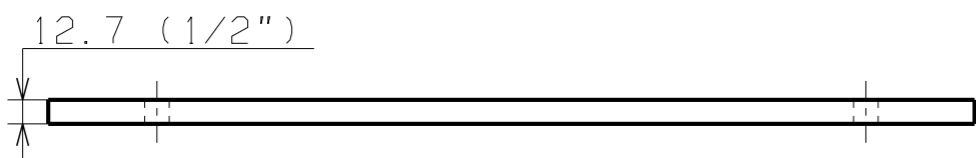
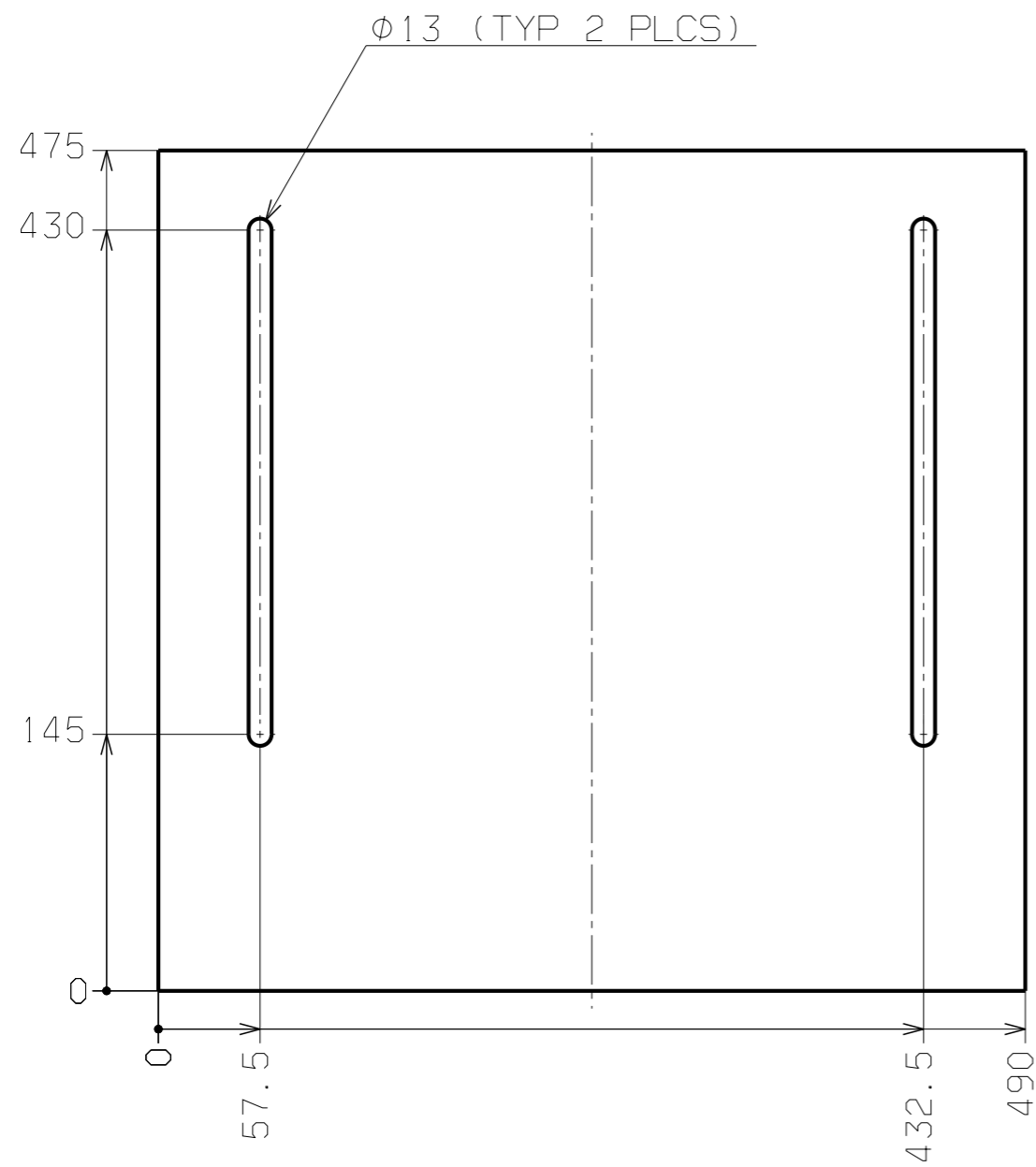
NOTES:  
 1) ASSEMBLY IS SYMMETRICAL ABOUT VERTICAL CENTERLINE.  
 2) WELDMENT A IS SYMMETRICAL TO WELDMENT C.

DWG - ASSEMBLY FOR 11HS, SIZE T-IMPACTOR WELDMENTS ABC (V1.0)  
 SCALE: 1:2  
 PAPER SIZE: A0 JIS  
 DATE: 10.MAR.23

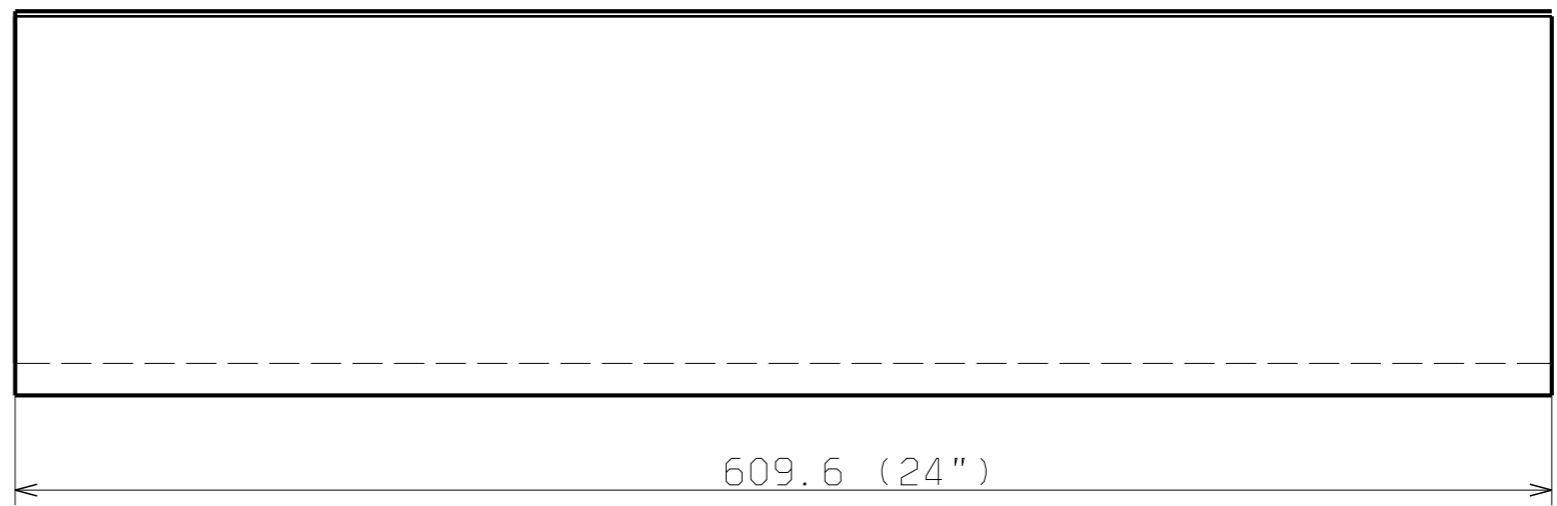
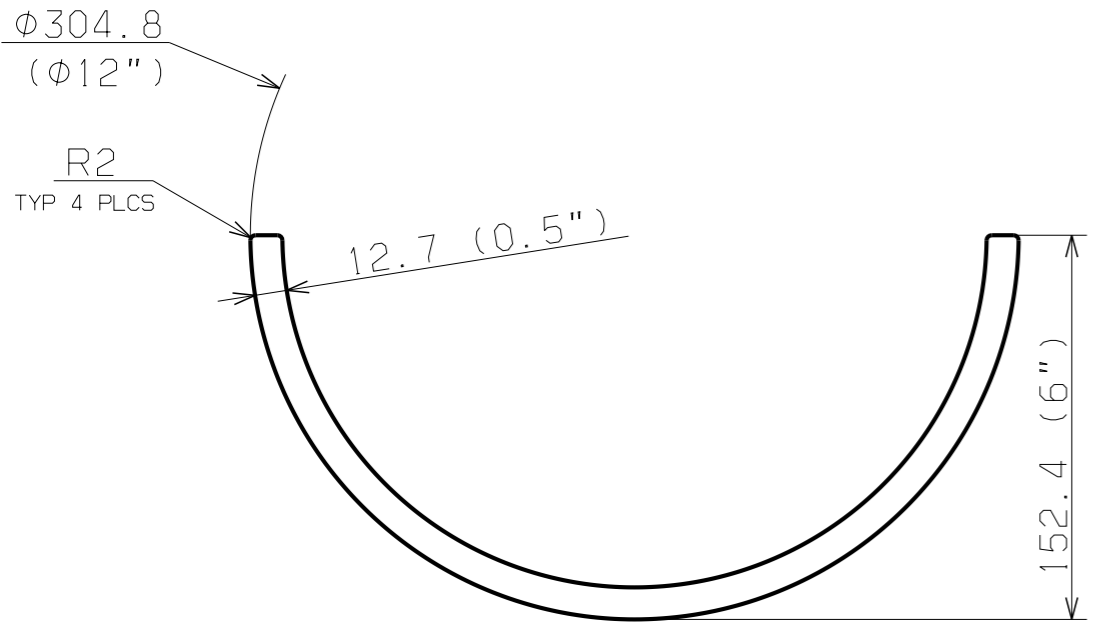
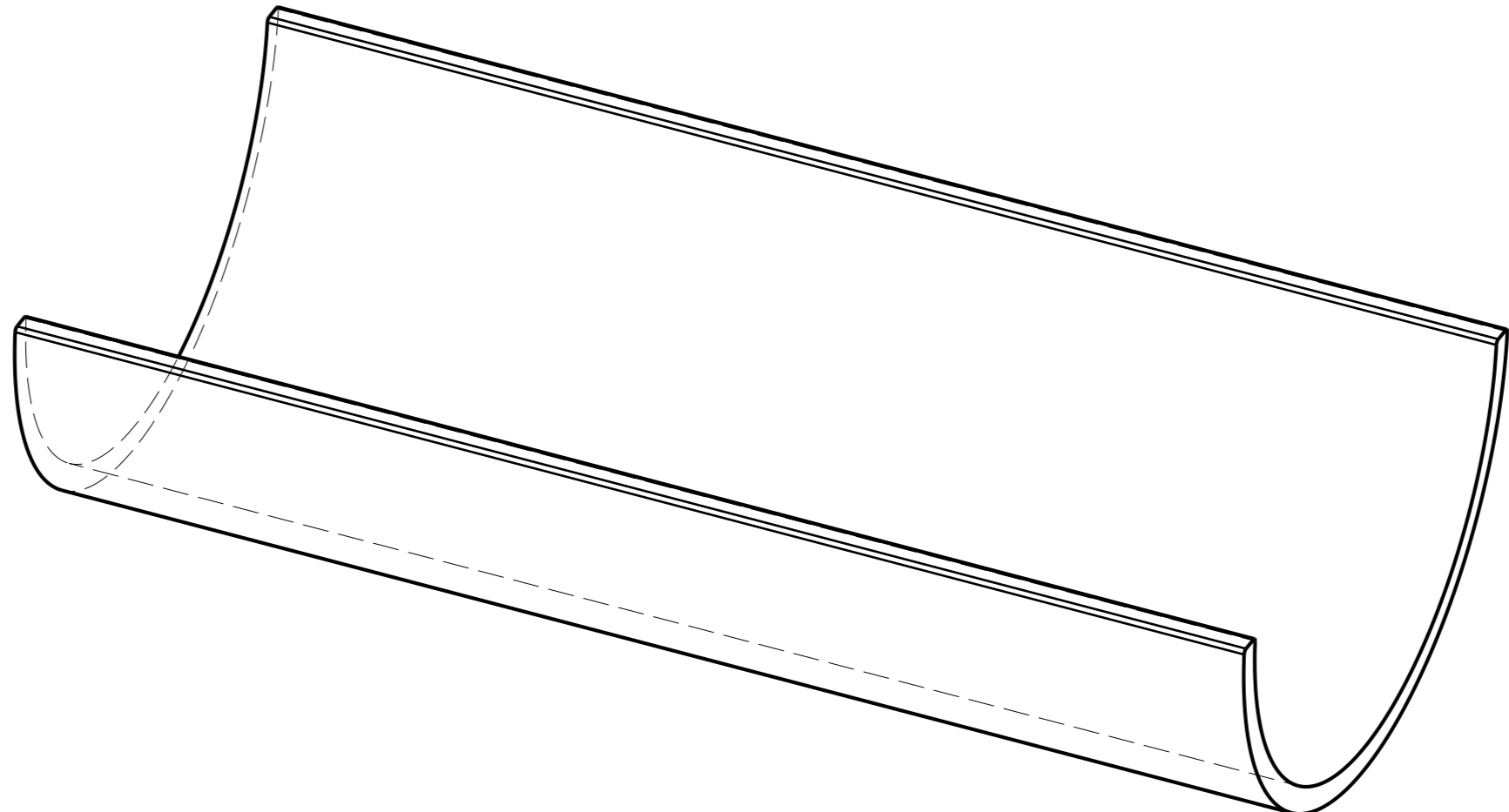


Isometric view (1:6)

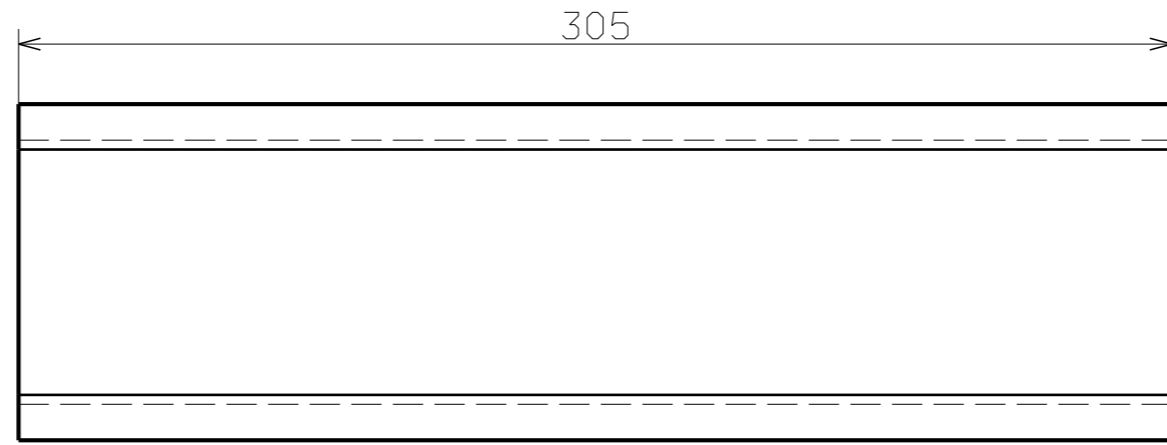
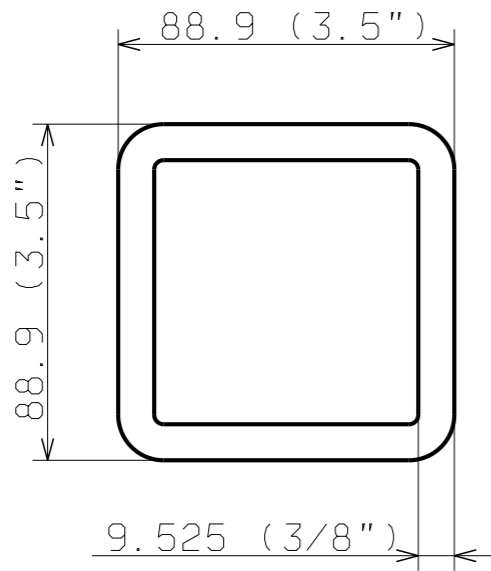
DWG - BACKING PLATE, A&C WELDMENT  
 QTY: 2  
 SCALE: 1:4  
 MATERIAL: A36 STEEL  
 MASS: 31.8 KG  
 DATE: 09.MAR.23



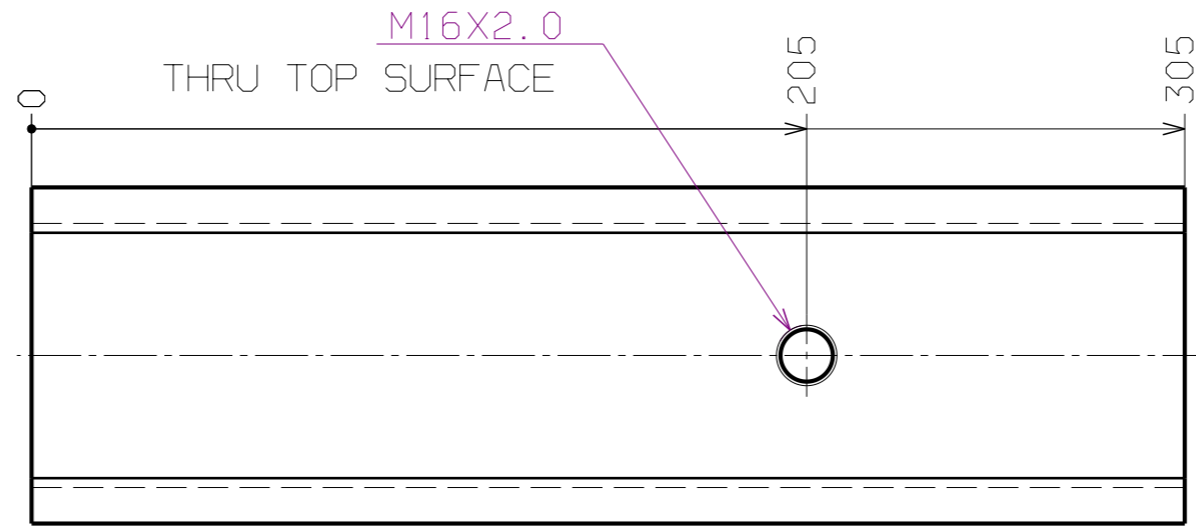
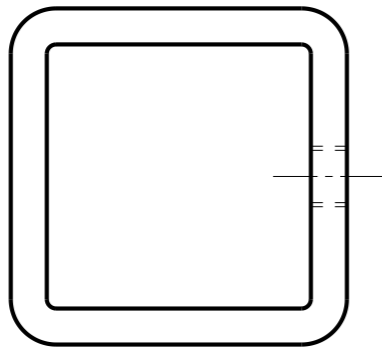
DWG - BACKING PLATE, CENTER WELDMENT  
 QTY: 1  
 SCALE: 1:4  
 MATERIAL: A36 STEEL  
 MASS: 22.3 KG  
 DATE: 09.MAR.23



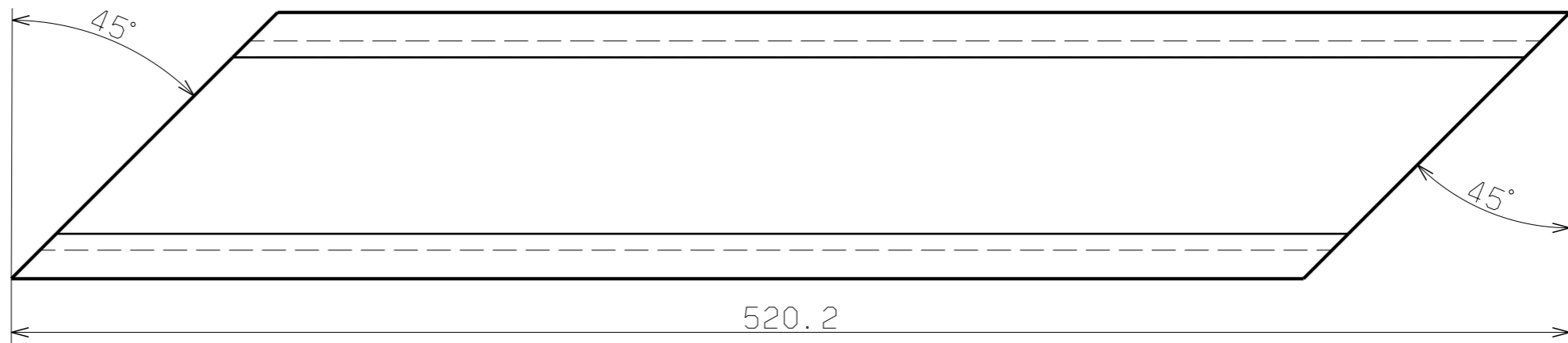
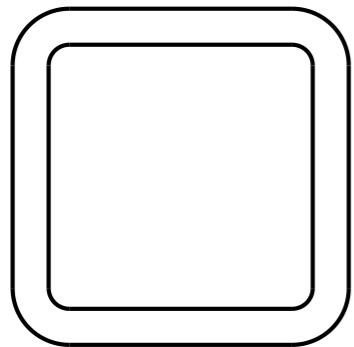
DWG - TUBE, (CUT IN HALF) 12 INCH OD X 0.5 WALL X 24 LENGTH  
QTY: 1  
MATERIAL: A513-T5 DOM STEEL  
SCALE: 1:3  
PAPER SIZE: A3 JIS  
DATE 09.MAR.23



QTY: 10

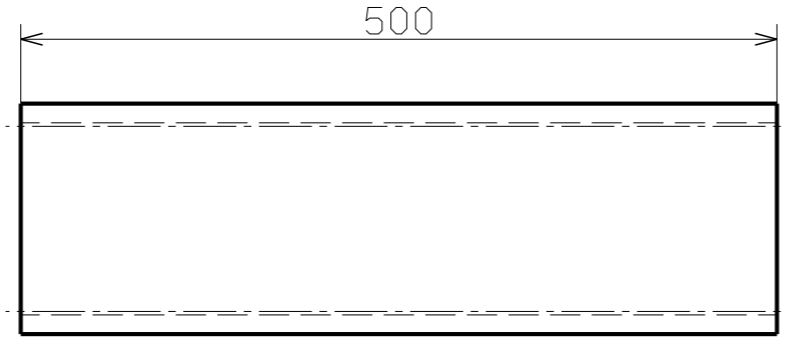
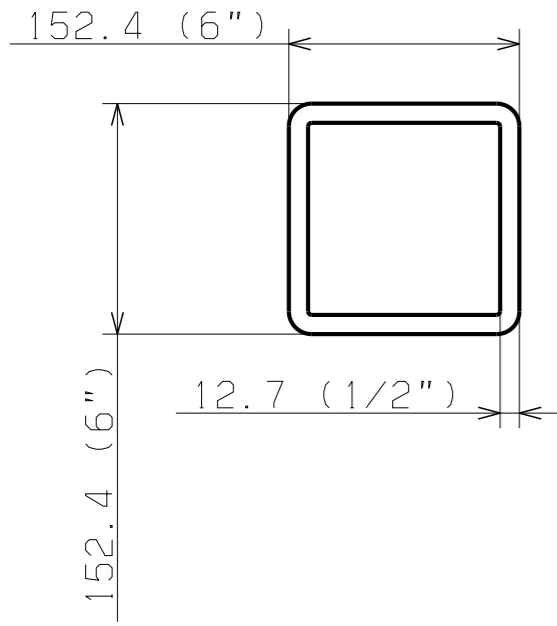


QTY: 2

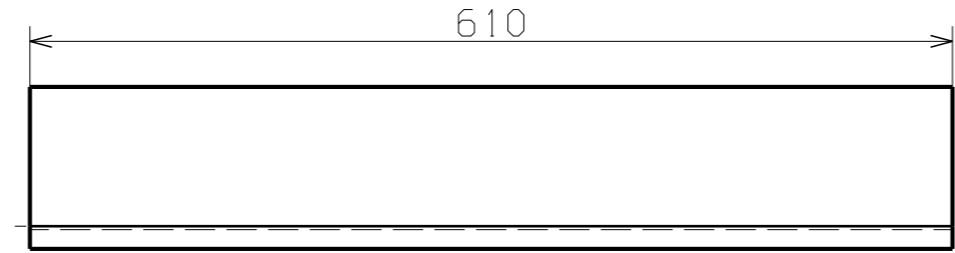
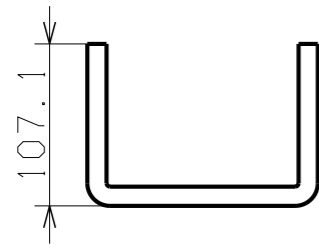


QTY: 1

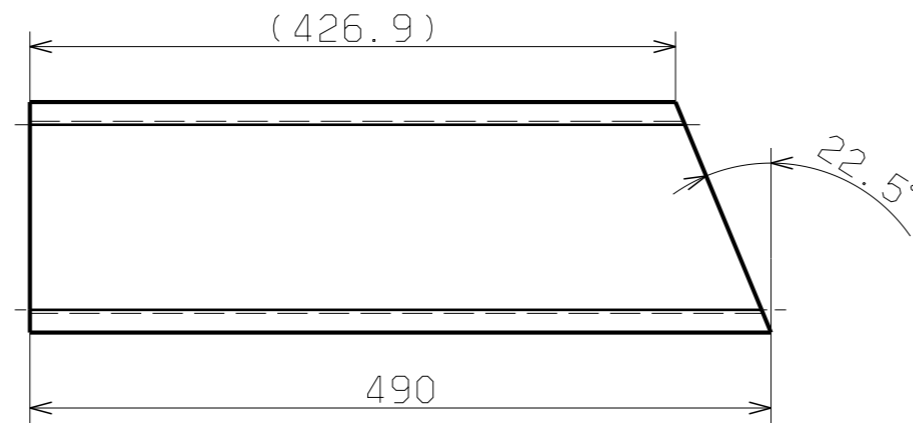
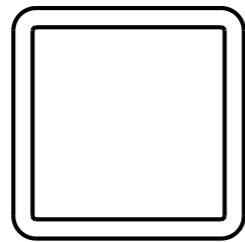
DWG - TUBES, 3.5X3.5X0.375 INCH  
 QTY: NOTED  
 SCALE: 1:2  
 MATERIAL: ASTM A-500 STEEL  
 PAPER SIZE: A3 JIS  
 DATE: 09.MAR.23



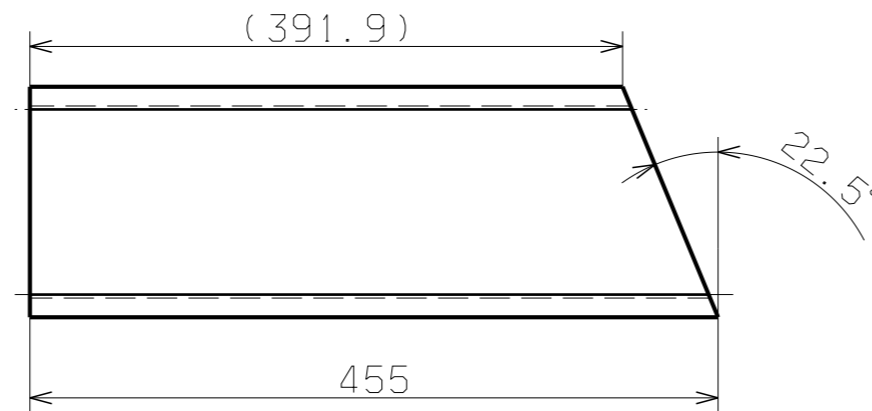
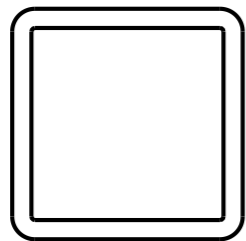
QTY: 1



QTY: 1

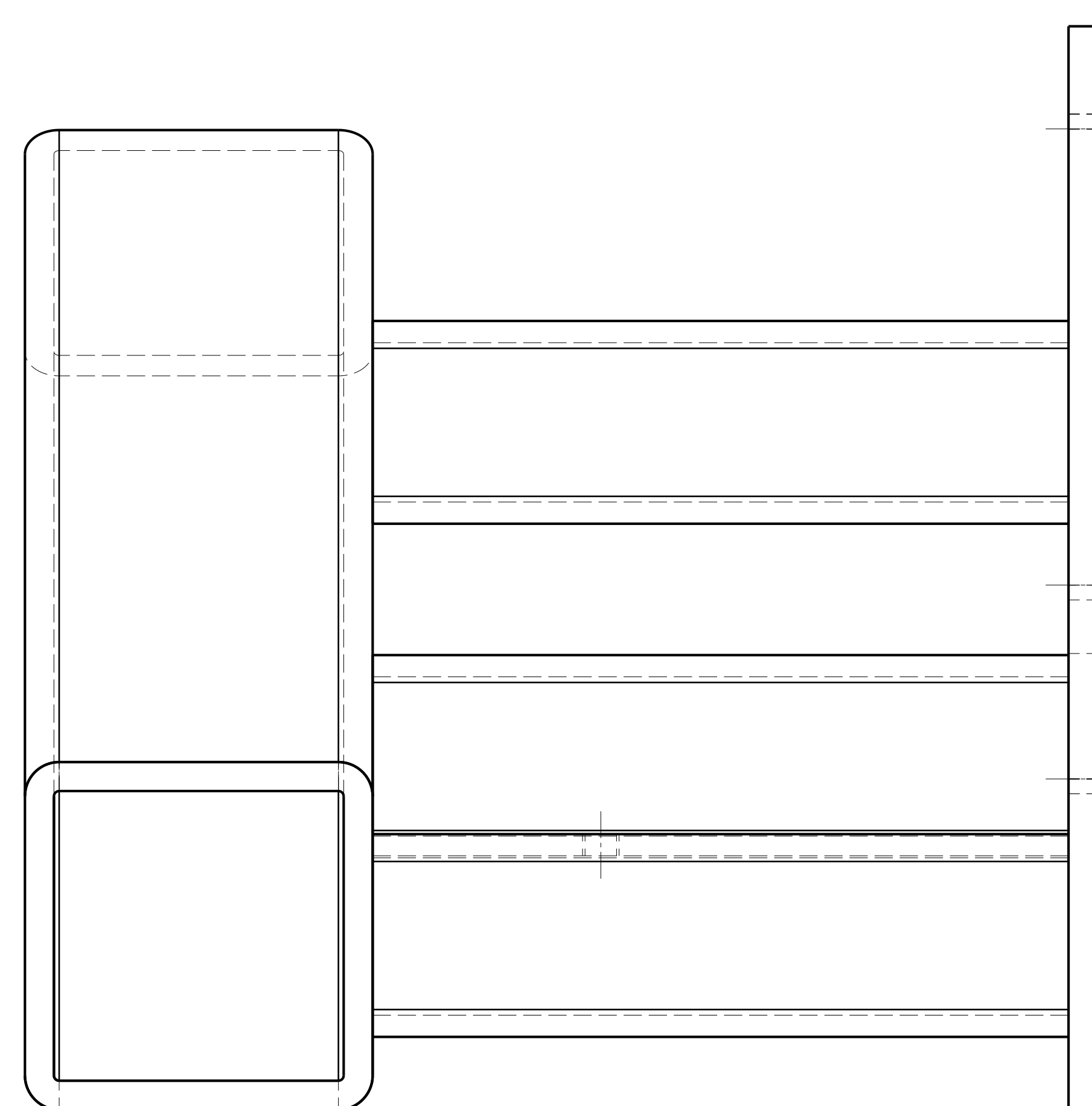
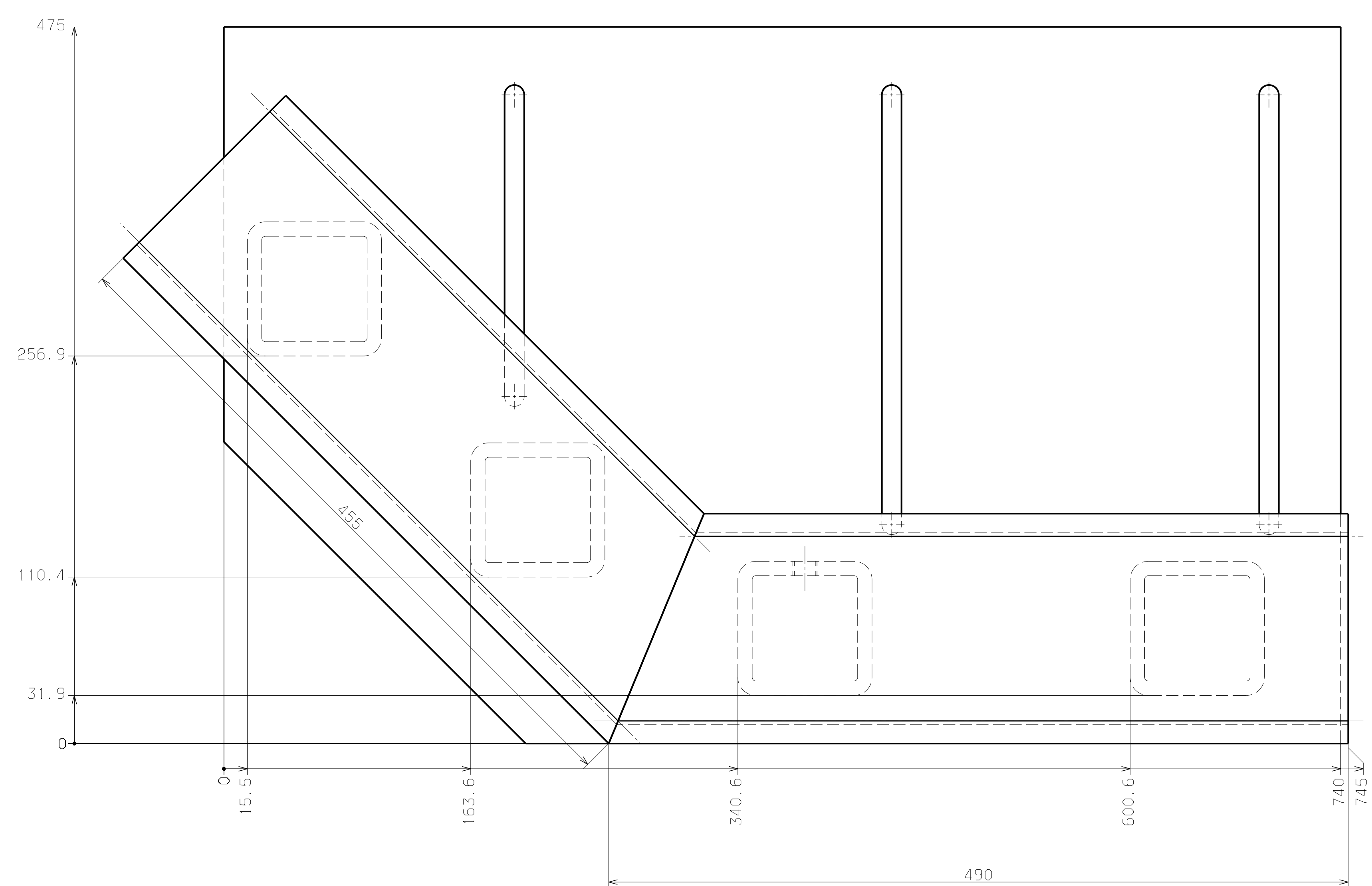
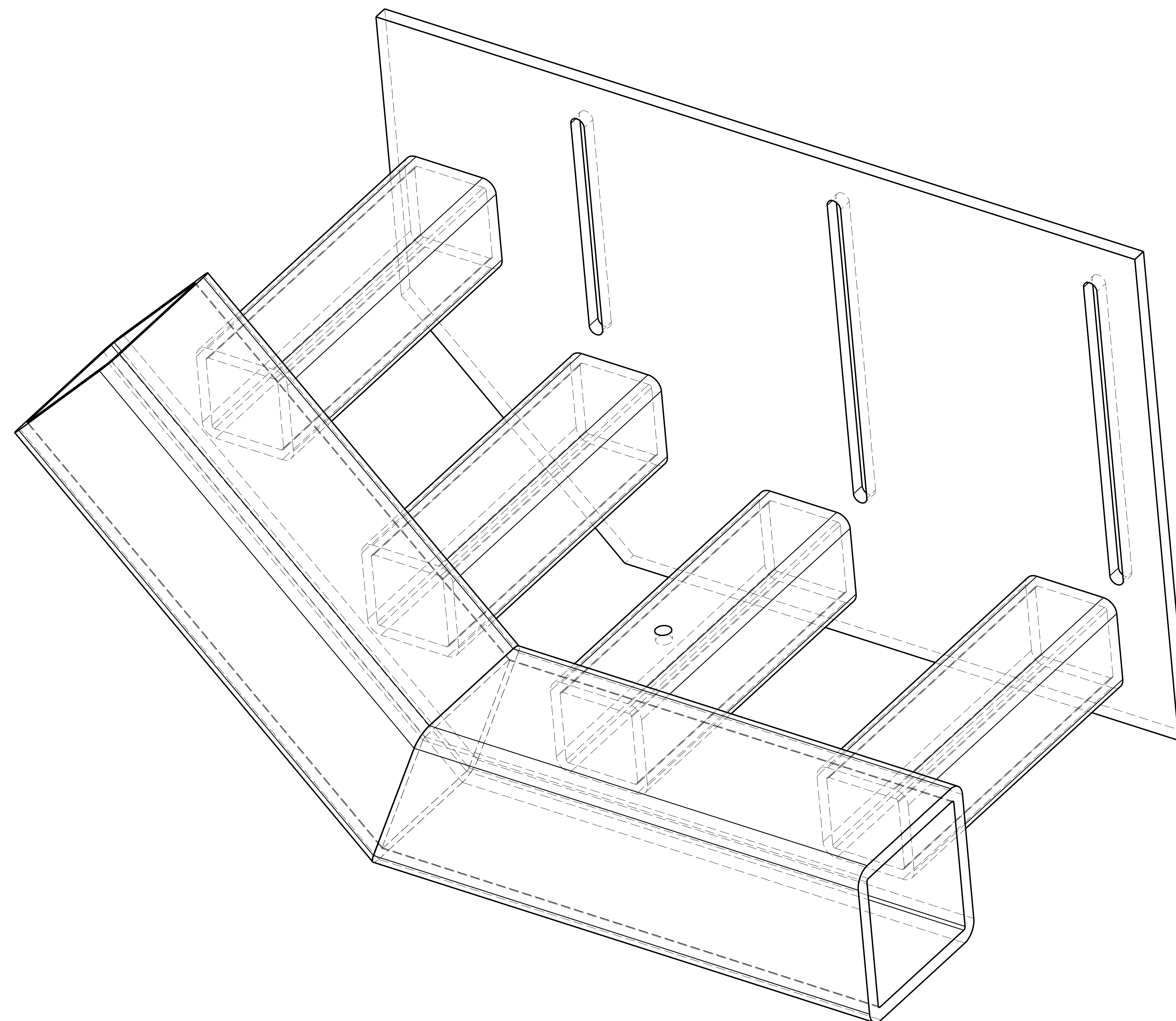
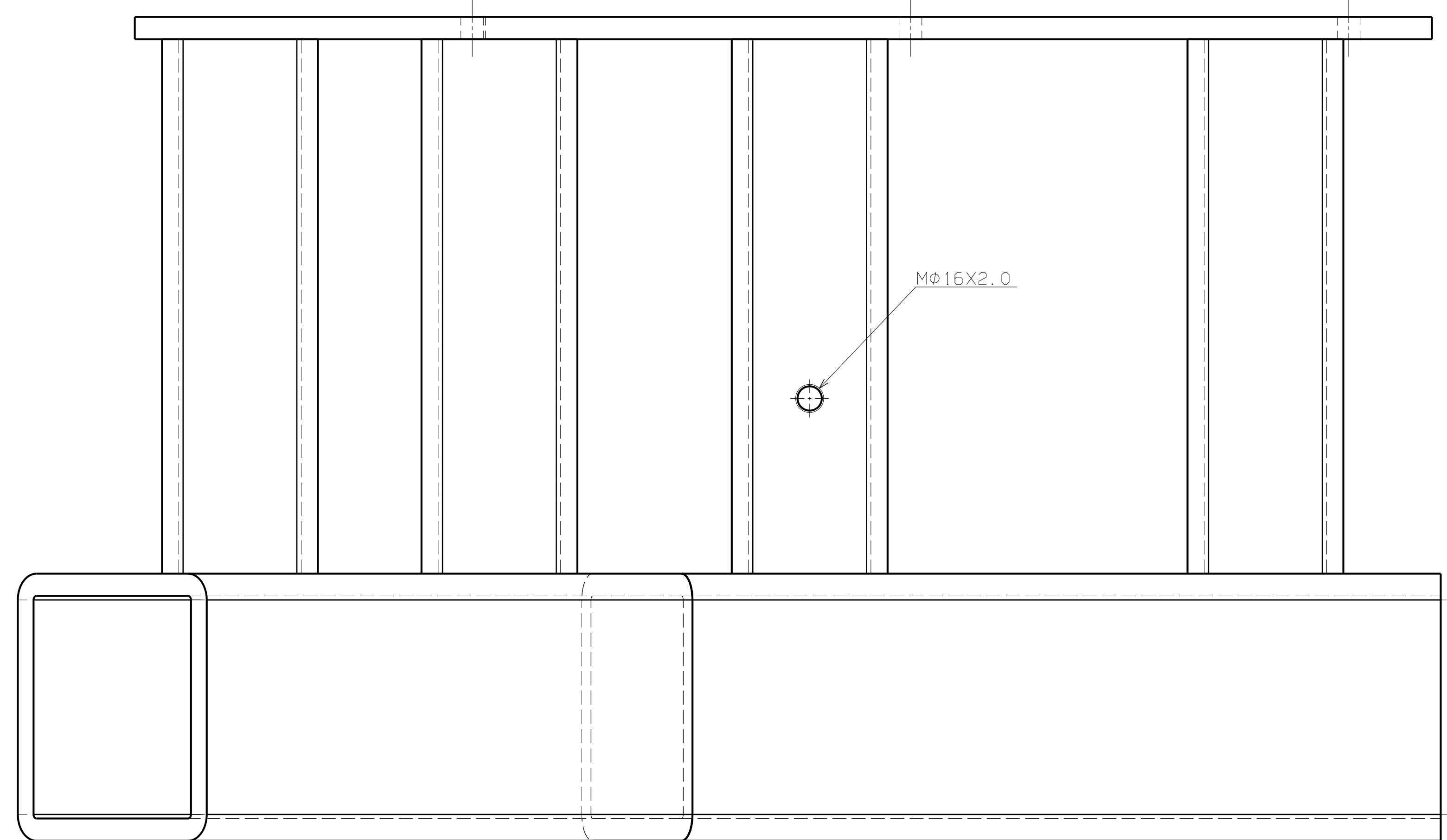


QTY: 2



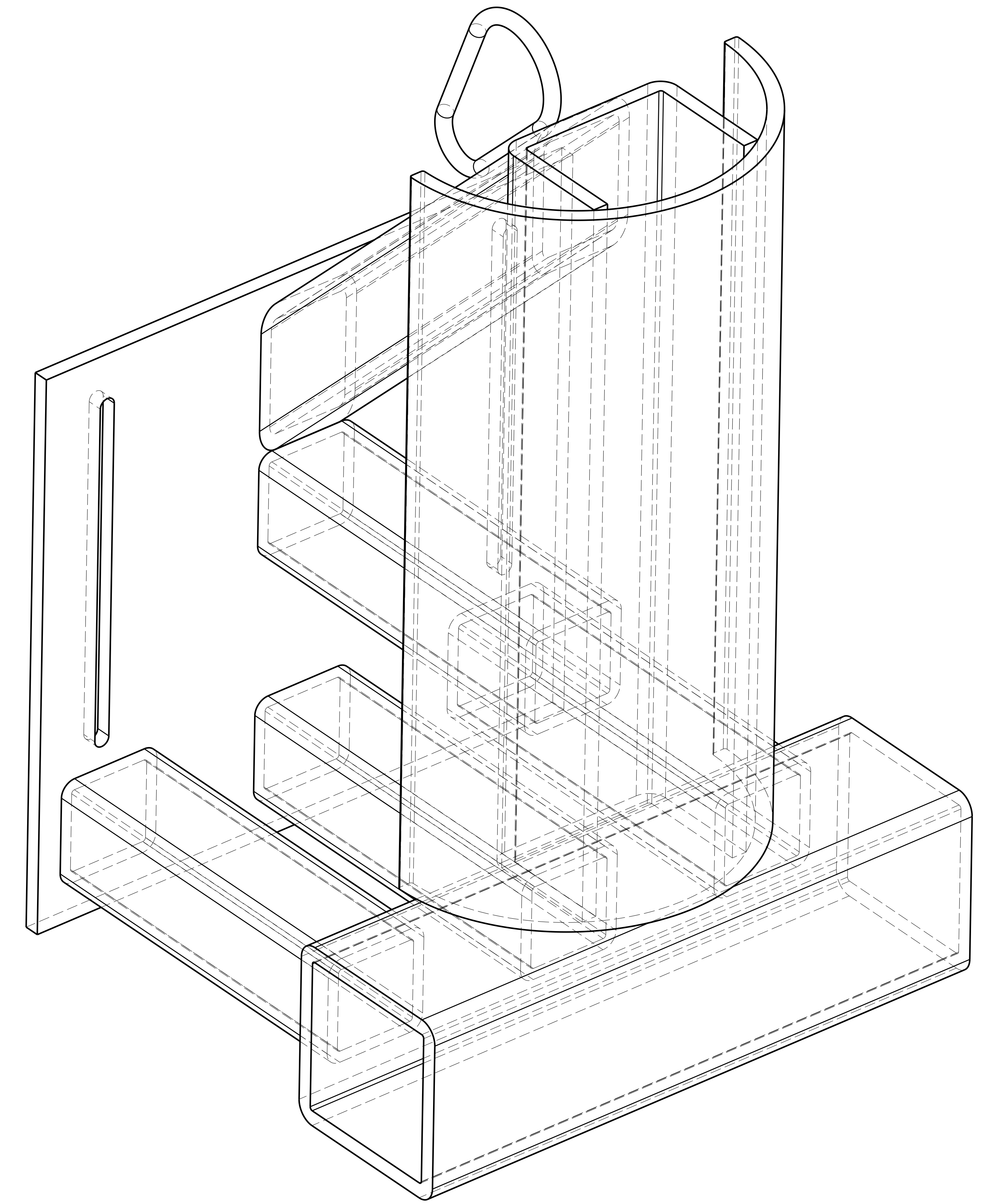
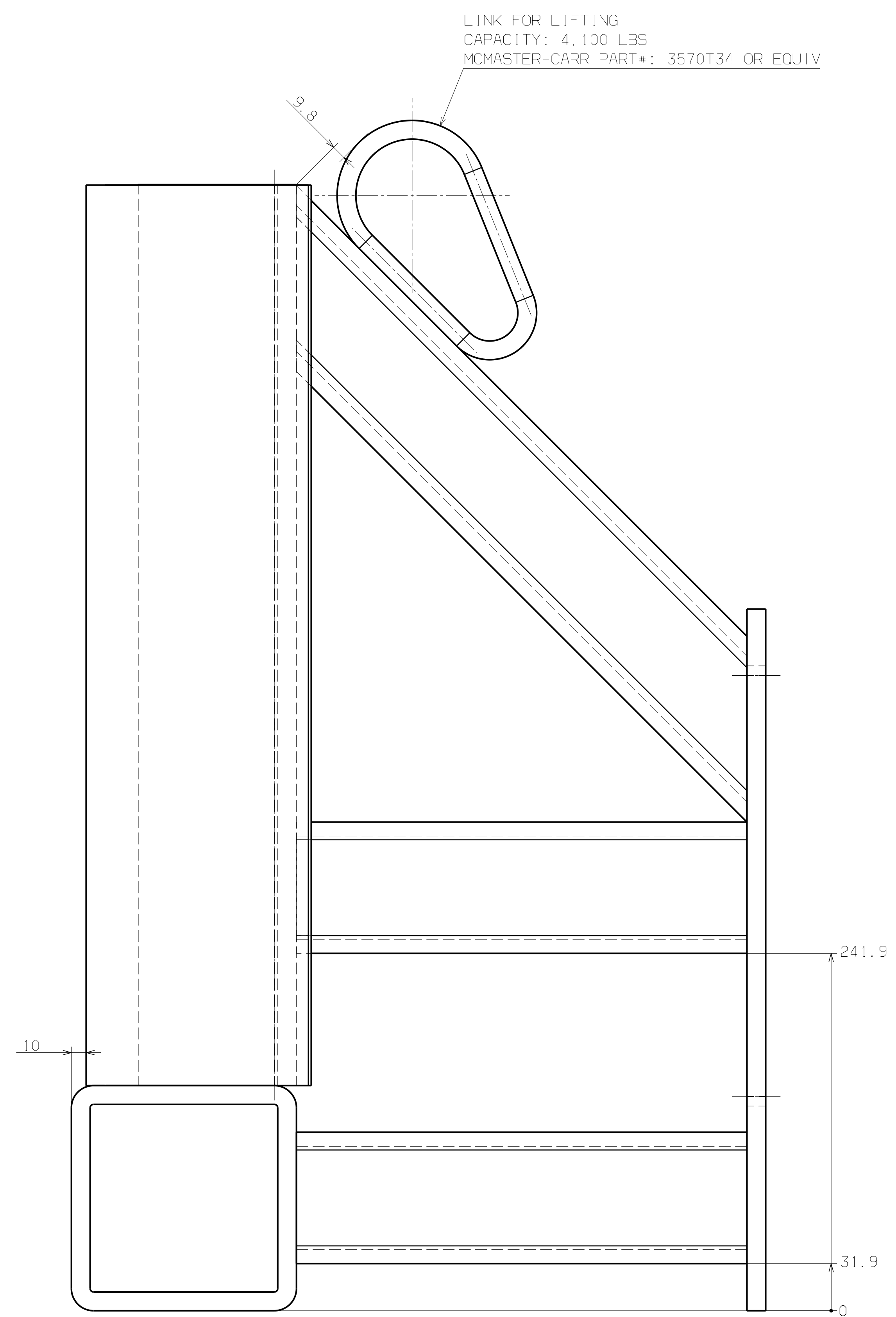
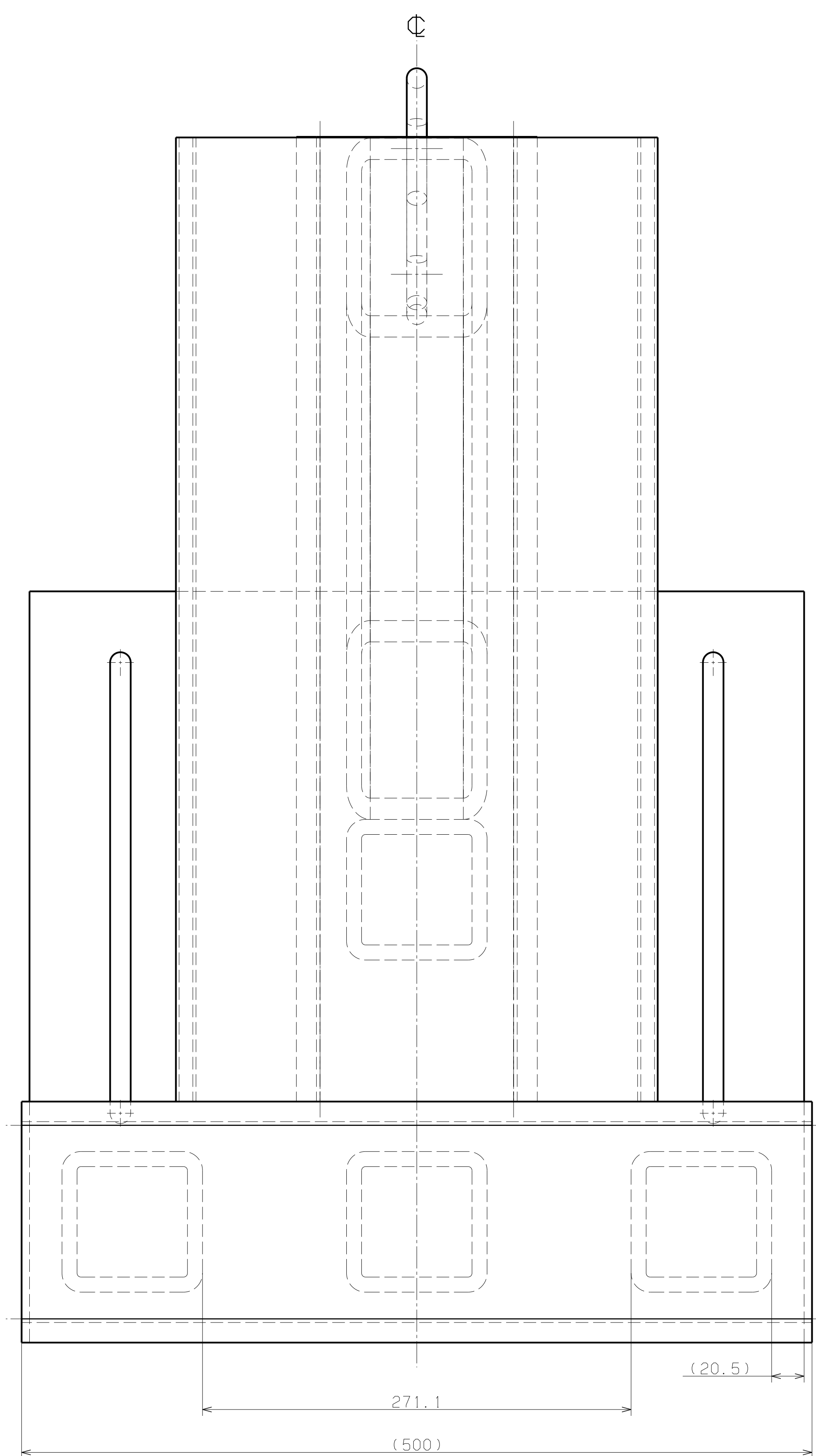
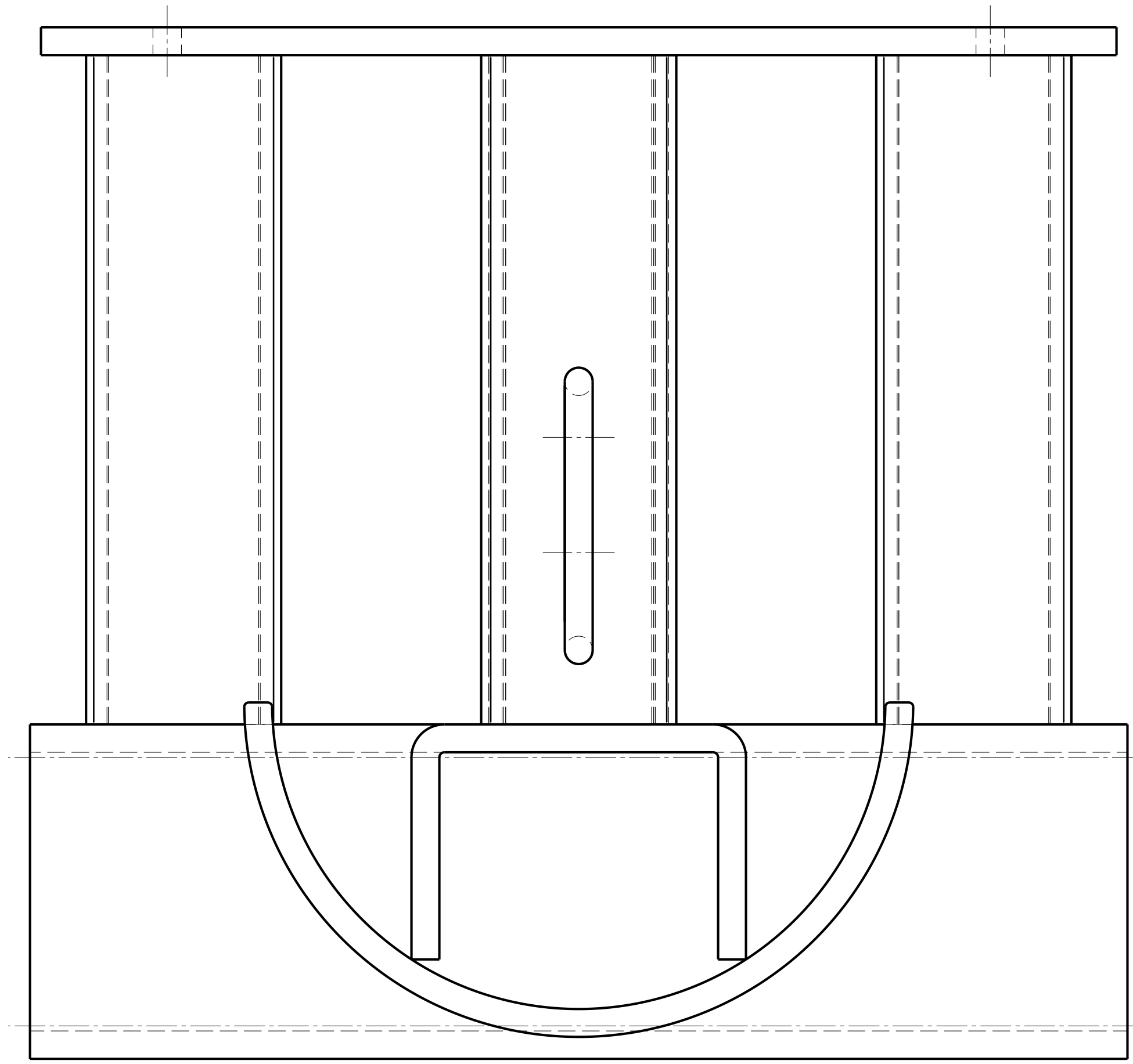
QTY: 2

DWG - TUBES, 6X6X0.5 INCH  
 QTY: NOTED  
 SCALE: 1:5  
 MATERIAL: ASTM A-500 STEEL  
 PAPER SIZE: A3 JIS  
 DATE: 09.MAR.23



NOTES:  
 1) THIS DRAWING SHOWS LH SIDE (WELDMENT A), RH SIDE (WELDMENT C) IS SYMMETRICAL.  
 2) CONNECTING PARTS NOT SPECIFIED SHALL BE FILLET WELDED,  
 MINIMUM LEG LENGTH=8MM.





NOTES:  
 1) PART IS SYMMETRICAL ABOUT CENTERLINE.  
 2) CONNECTING PARTS NOT SPECIFIED SHALL BE FILLET WELDED.  
 MINIMUM LEG LENGTH=8MM.